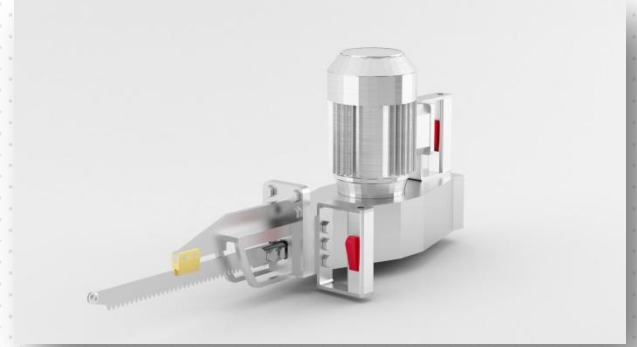




Document code	B25
Revision code	01
Revision date	20.11.2014
Publication date	22.07.2014
Page no	1

## BREAST OPENING SAW



**USAGE AREA:** 1<sup>ST</sup> CLASS SLAUGHTER HOUSES

**QUALITY:** STAINLESS CHROME

### PROPERTIES O MACHINE

#### A-SUBJECT:

Providing breast opening saw for using in the slaughter hall of slaughter houses.

#### B- TECHNICAL PROPERTIES:

- Working voltage: 400 V / 50 Hz / 3 phased.
- Engine power : 1.8 HP ( 1800 W )
- Cutting depth : Minimum 300 mm
- Blade length : Minimum 300 mm
- Total length : Minimum 820 mm
- Saw will be mounted with whole equipment and panel and electric connections will be done and delivered in running mode.
- 2 piece of backup blades will be given
- Will be delivered as all connections are done.
- There will be no corrodible material on the saw.

#### C. GENERAL ISSUES

- Will be appropriate to the matters which is signified on Technical Properties.
- 2 years of warranty will be provided for breast opening saw.